

SOCIETE GENERALE'S CALL FOR ARTISTS IN HONG KONG



As part of the renovation of its Hong Kong premises in Three Pacific Place, [Societe Generale](#) (SG) would like to acquire artworks from young Hong Kong artists for the main reception, frequented by numerous guests, including staff and clients.

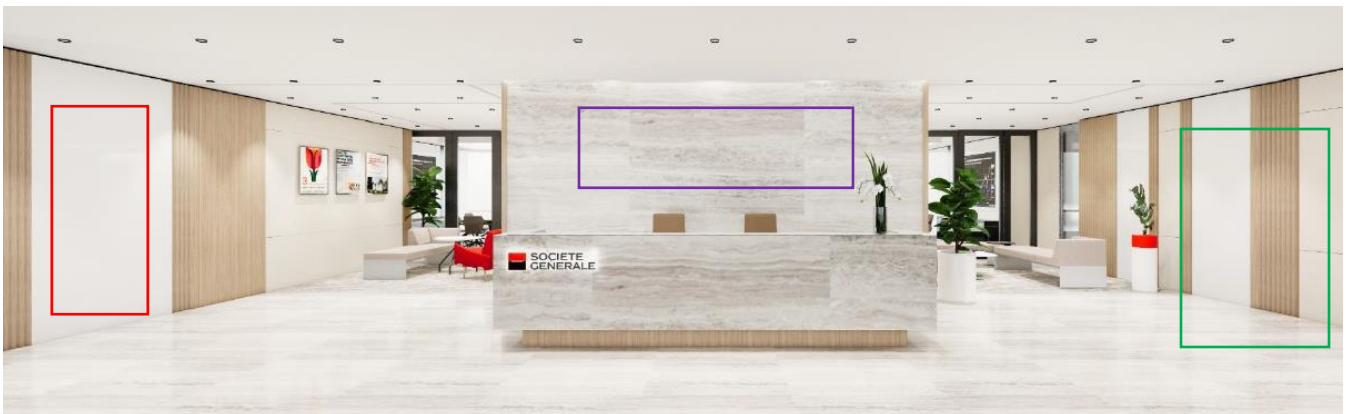
BACKGROUND

Committed to culture, Societe Generale is proud to convey the love for contemporary art with the wider public. The Bank has been supporting international artists for more than 20 years and its diversified [contemporary art collection](#) mainly housed in Paris La Defense head office – with photography, paintings and sculptures from both well-known and emerging talents – materialises the Group's goal to forge closer links between the arts and business worlds.

Today, we want to seize the opportunity to extend this commitment to our Asia Pacific hub in Hong Kong by giving the opportunity for young artists to showcase their work of art.

OPPORTUNITY

This opportunity entails the **selection and acquisition of 3 artworks illustrating the theme “The World As Home” to be exhibited in SG’s main reception** where three areas of focus have been identified: [the wall behind the reception desk](#), [the wall on the left](#) and [the space on the right](#).



The artist(s) selected will receive **50,000 HKD for each work**.

ELIGIBILITY

It is **open to current Masters/PhD level students or artists based in Hong Kong who have graduated within the past 5 years**, from leading art schools/universities.

Painting, photography or sculpture fitting the constraints detailed in appendix can be considered.

Candidates must be available to attend meetings, if required, at SG's offices in Hong Kong.

HOW TO APPLY?

Artists must submit a PDF format to asiacom@sgcib.com by **31 December 2021** including:

- Page 1: **up to 10 images** to show their practice
- Page 2: **a short statement** (200 words max) summarising their practice + website's link (if existing)
- Page 3: **an artwork proposal** for 1 or multiple areas of focus with an explanation of the concept

All expressions of interest will be considered by an art panel committee composed of recognized art professional experts and Societe Generale art representatives.

SELECTION

The art panel committee will base its selection on the following criteria:

- **Form:** quality of the execution, choice of materials and simplicity of preservation
- **Content:** concept, message and consistency with the defined theme
- **Balance/complementarity** of the 3 artworks in terms of technique, expression and genre

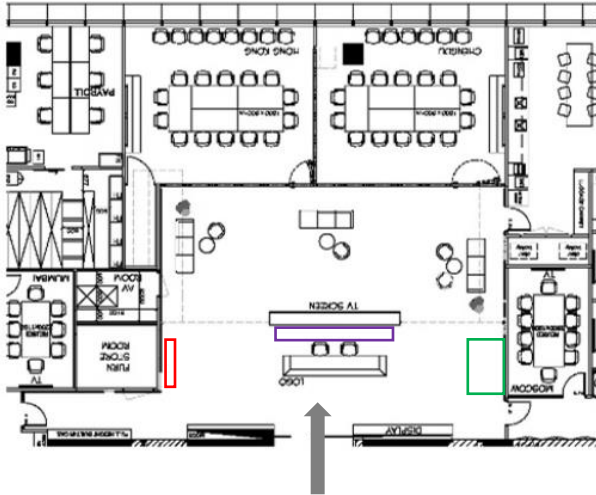
SCHEDULE¹

December 2021	Artists' submission
January 2022	Pre-selection by the art panel committee
February 2022	Final selection by the art panel committee
March 2022	Artworks' installation

¹ Subject to changes/adjustments.

APPENDIX

Floorplan of the reception



Maximum dimensions and weight for each artwork

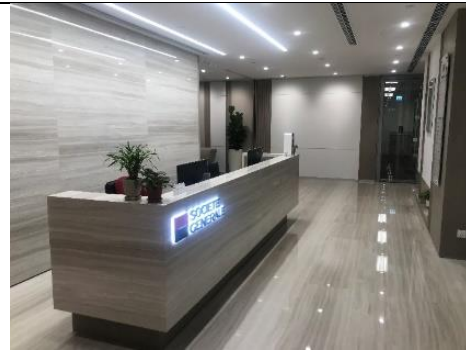
Location	Width	Height	Depth	Weight	Comment
Middle	350 cm	100 cm	20 cm	20 kg	painting or photography
Left	120 cm	220 cm	20 cm	20 kg	painting or photography
Right	150 cm	220 cm	100 cm	150 kg	painting, photography or sculpture

Photos

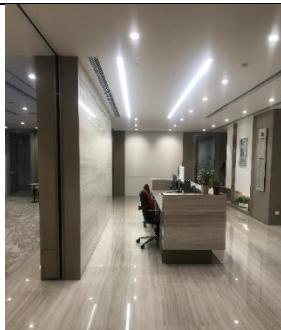
- the wall behind the reception desk



Facing view



Perspective view

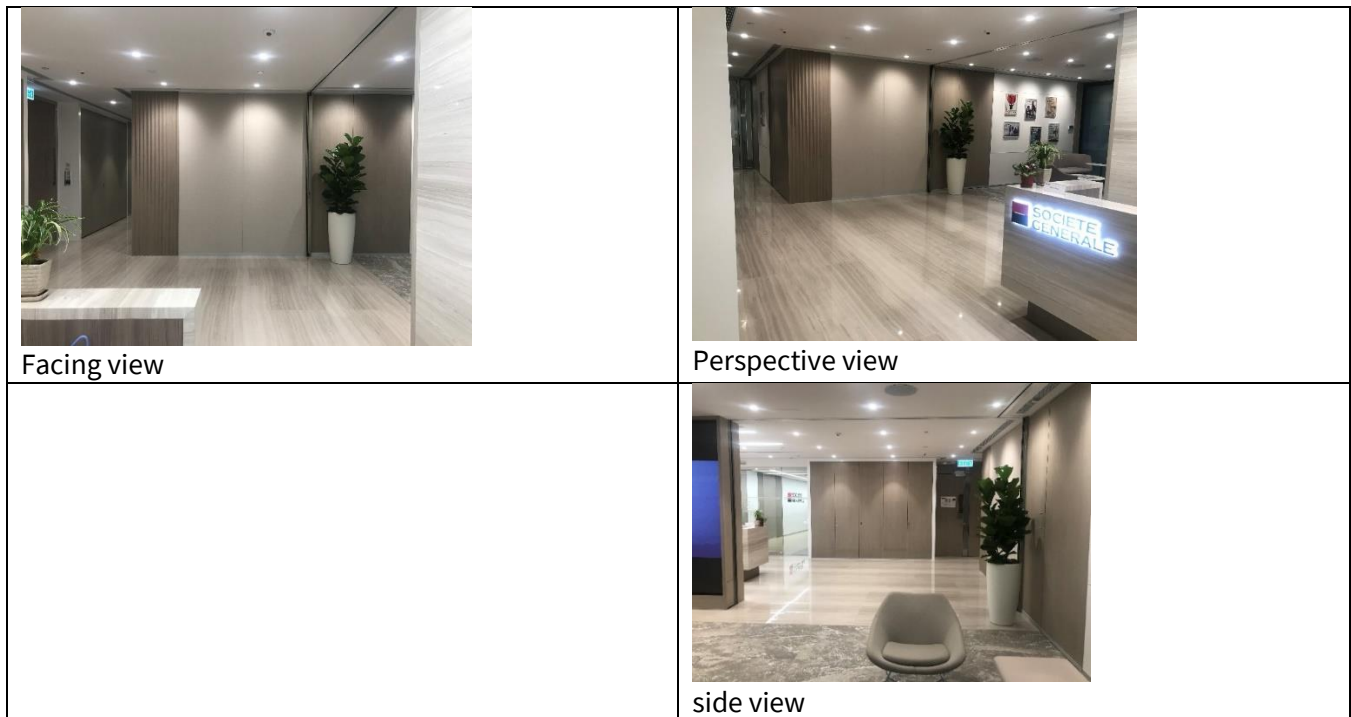


Side view



Other side view

- the wall on the left (when facing the reception desk)



- the space on the right (when facing the reception desk)

